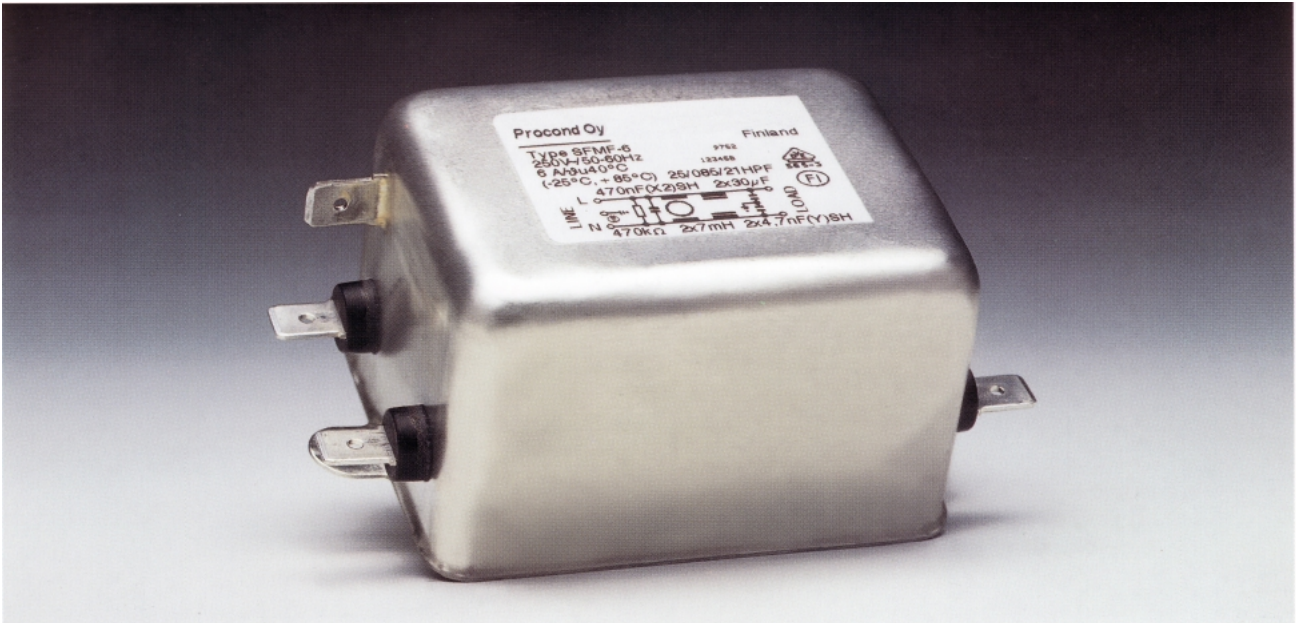


Chassis mounted filter



SFMF

High performance multistage chassis mounted filter for demanding industrial applications

Extra high performance multi purpose filter with two-stage circuitry. SFMF-filter construction has been designed for excellent performance at low frequencies. Enhanced common and differential mode attenuation. C-type with 22000 pF Y-capacitors.

Applications: SMPS, very sensitive systems and installations, environments with very high level of interference.

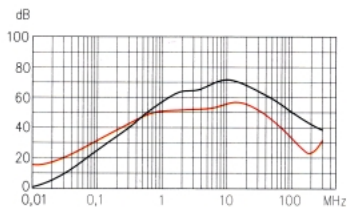
- 6 – 16 A current ratings
- VDE, FI

Operating voltage: 250 VAC
 Operating frequency: 0 – 400 Hz
 Temperature range: -25°C - +85°C

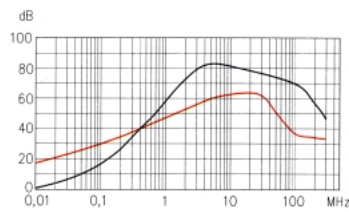
Type	Rated current [A] (40°C)	Max. Leakage current [mA] (250 V, 50 Hz)	L1 [mH]	L2 [mH]	Cx [µF]	Cy [pF]	R [MΩ]	Weight [g]
SFMF-6	6	0,5	2 x 7	2 x 0,03	0,47	2 x 4700	0,47	290
SFMF-6C	6	2,1	2 x 7	2 x 0,03	0,47	2 x 22000	0,47	290
SFMF-10	10	0,5	2 x 4	2 x 0,04	0,47	2 x 4700	0,47	800
SFMF-10C	10	2,1	2 x 4	2 x 0,04	0,47	2 x 22000	0,47	800
SFMF-16	16	0,5	2 x 2	2 x 0,025	0,47	2 x 4700	0,47	800
SFMF-16C	16	2,1	2 x 2	2 x 0,025	0,47	2 x 22000	0,47	800

Connectors: Faston 6,3 x 0,8mm

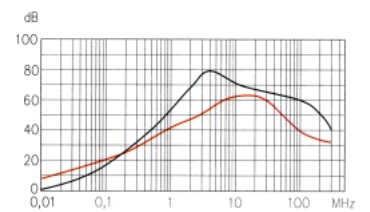
SFM-6



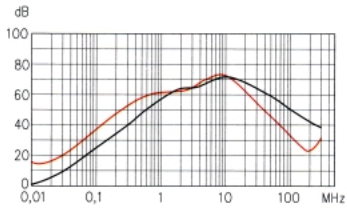
SFM-10



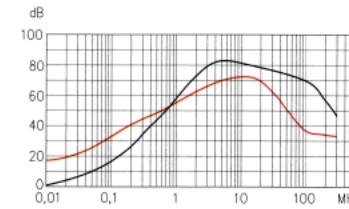
SFM-16



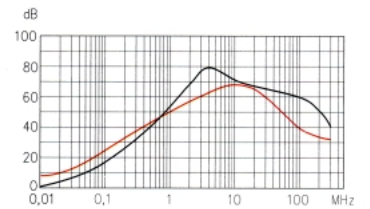
SFM-6C



SFM-10C

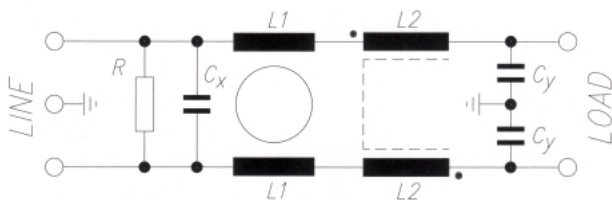


SFM-16C

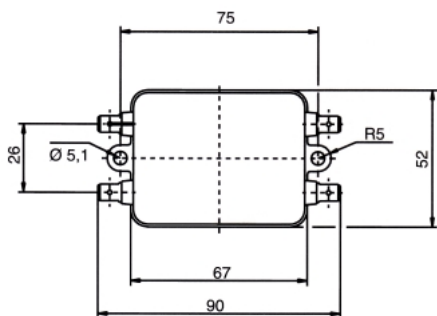
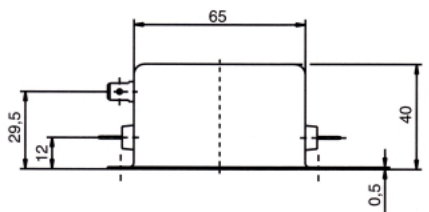


- asym.,
- symm.

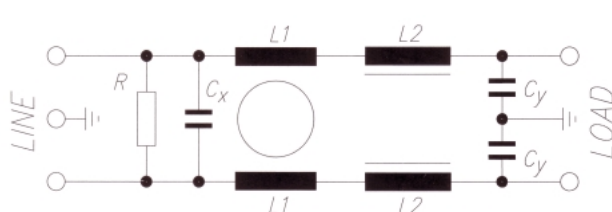
SFM-6



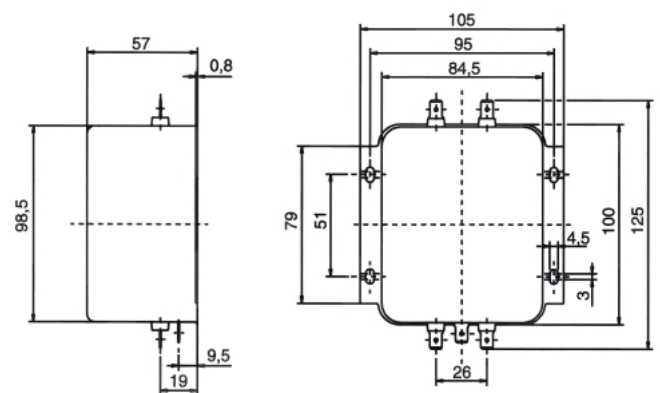
SFM-6



SFM-10, SFM-16



SFM-10, SFM-16



PROCOND OY
 Veikkointie 9
 FI-03100 Nummela
 Finland

www.procond.fi
 sales@procond.fi
 Tel. +358 (0)10 424 8900
 Fax. +358 (0)10 424 8901