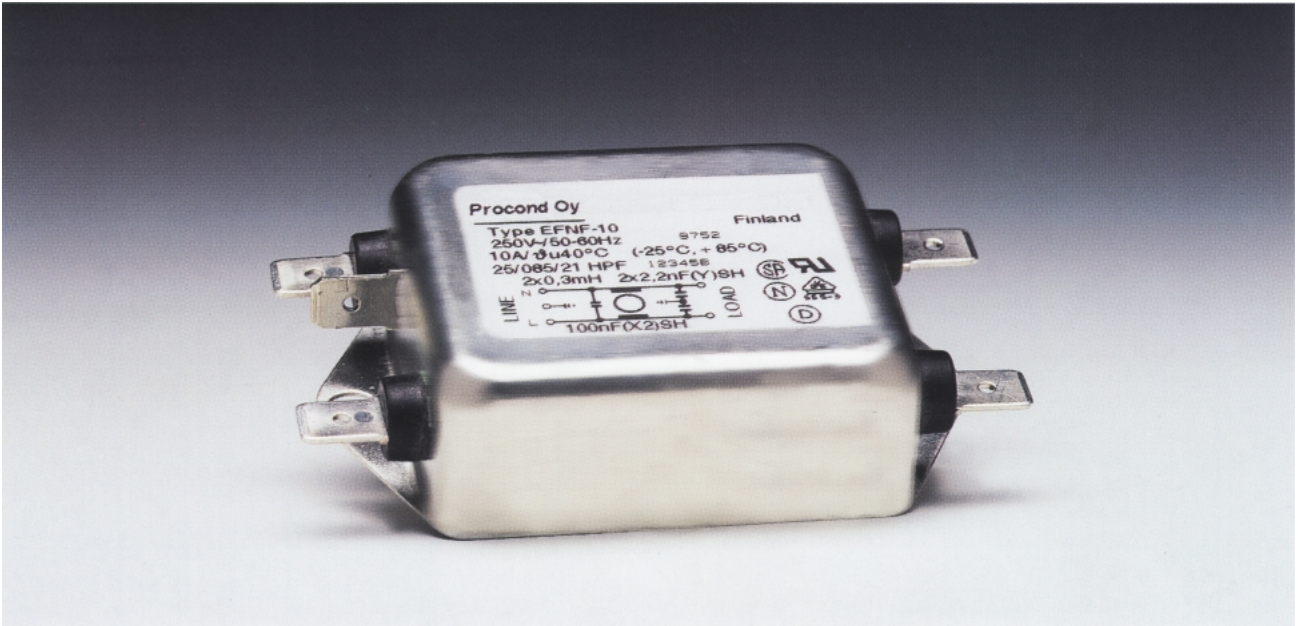


# Chassis mounted filter



## EFNF

### Chassis mounted filter for industrial applications

General purpose filter with single stage circuitry.

Applications: Systems and installations

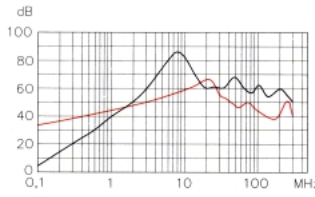
- 1 – 10 A current ratings
- UL, CSA, VDE, S, N, D, FI

Operating voltage: 250 VAC  
Operating frequency: 0 – 400 Hz  
Temperature range: -25°C - +85°C

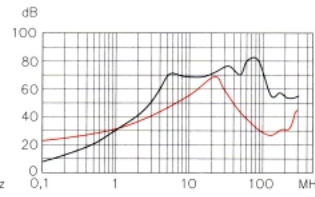
Type	Rated current [A] (40°C)	Max. Leakage current [mA] (250 V, 50 Hz)	L [mH]	Cx [µF]	Cy [pF]	Weight [g]
EFNF-1	1	0,2	2 x 9	0,1	2 x 2200	85
EFNF-3	3	0,2	2 x 2	0,1	2 x 2200	85
EFNF-6	6	0,2	2 x 0,8	0,1	2 x 2200	85
EFNF-10	10	0,2	2 x 0,3	0,1	2 x 2200	85

Connectors: Faston 6,3 x 0,8mm

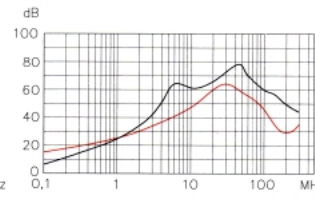
EFN-1



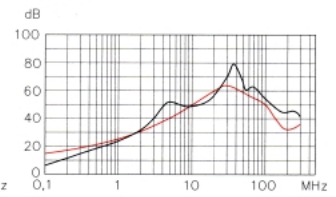
EFN-3



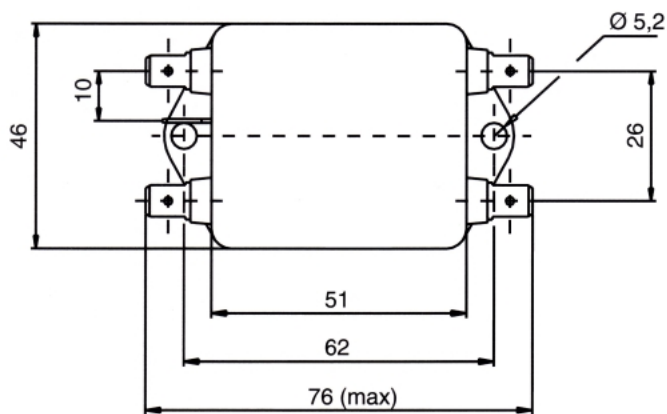
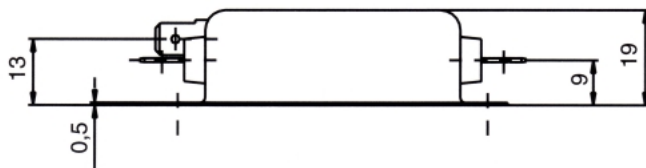
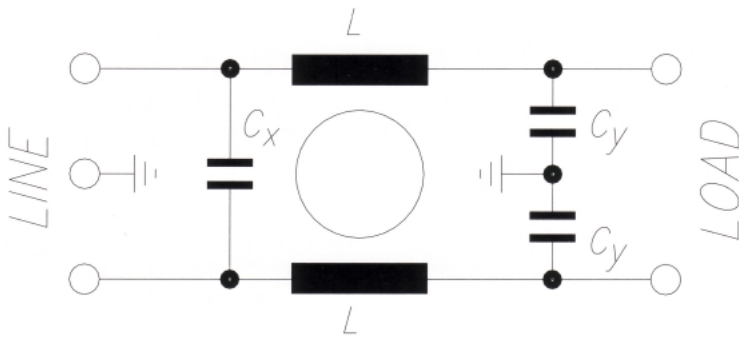
EFN-6



EFN-10



- asym.,
- symm.



**PROCOND OY**  
 Veikkointie 9  
 FI-03100 Nummela  
 Finland

www.procond.fi  
 sales@procond.fi  
 Tel. +358 (0)10 424 8900  
 Fax. +358 (0)10 424 8901