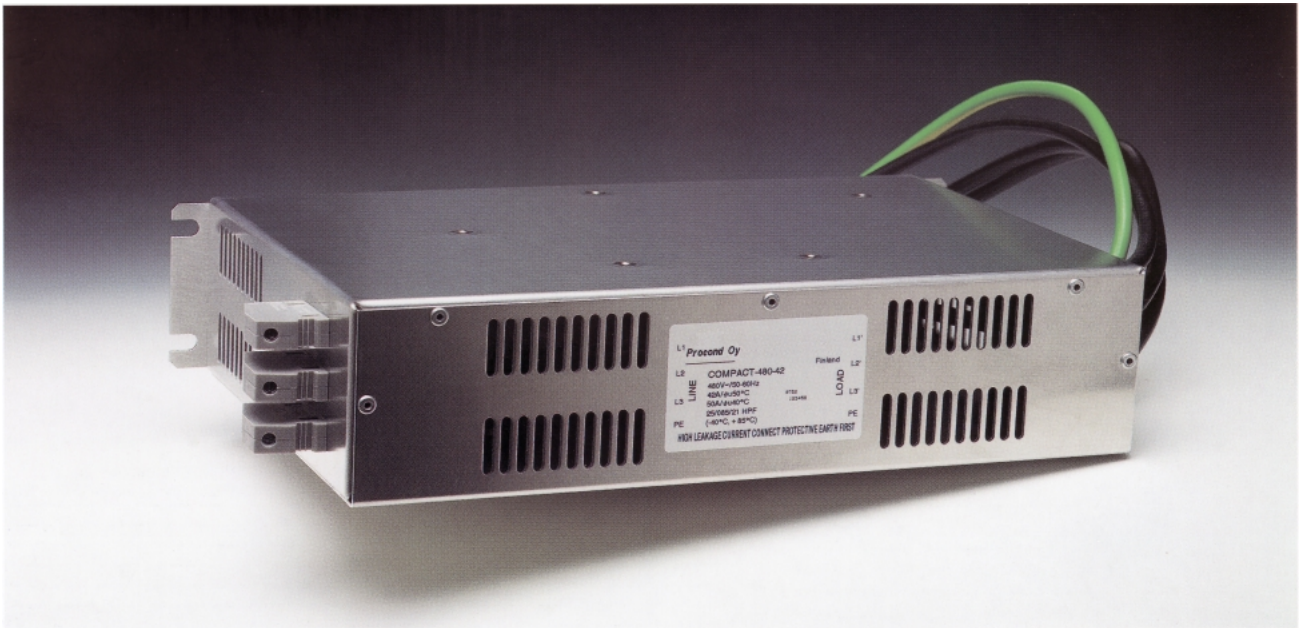


Chassis mounted filter



COMPACT

High performance filters for power drive system applications

A very high performance power drive system filter with special circuitry. These filters provide very good performance for industrial inverter and PDS-applications for motor cable lengths up to 100 m and more. Available in two different voltage ratings: 480 V and 520 V.

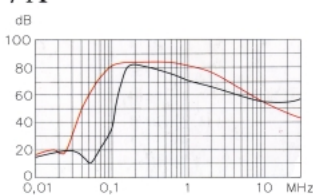
Applications: Power drive systems and installations

- 7 – 180 A Current ratings

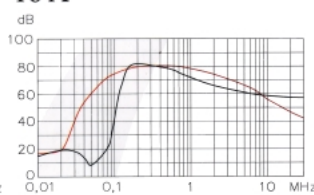
Operating voltage:
Operating frequency:
Temperature range:

480 VAC or 520 VAC
0 – 400 Hz
-40°C - +85°C

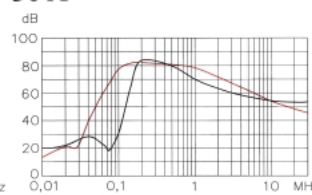
7 A



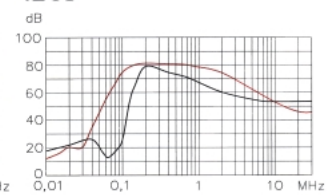
16 A



30 A

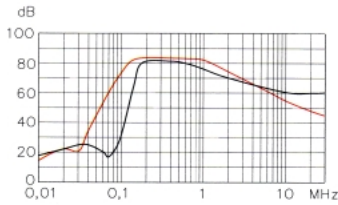


42 A

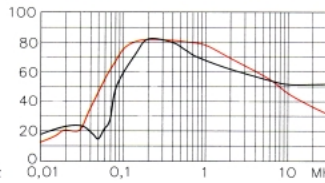


Type	Rated current [A] (50°C)	Rated current [A] (40°C)	Max. Leakage current [mA] (250 V, 50 Hz)	Power Loss [W]	ΣL [mH]	ΣCx [μF]	Σcy [μF]	Weight [kg]
COMPACT-480/520 -7	7	8	107	4,3	2,2	6,6	2,3	1,0
COMPACT-480/520 -16	16	19	107	7	2,2	6,6	2,3	1,3
COMPACT-480/520 -30	32	36	128	14	1,4	11,0	2,3	1,7
COMPACT-480/520 -42	42	50	128	16	1,1	11,0	2,3	2,3
COMPACT-480/520 -55	55	65	128	23	1,1	11,0	2,3	2,5
COMPACT-480/520 -75	75	90	128	38	1,2	11,0	2,3	3,4
COMPACT-480/520 -100	100	120	128	36	0,8	11,0	2,3	4,5
COMPACT-480/520 -130	130	150	129	35	0,4	13,2	2,3	5,7
COMPACT-480/520 -180	180	210	129	31	0,1	13,2	2,3	6,1

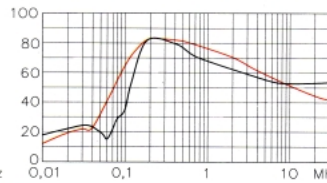
55 A



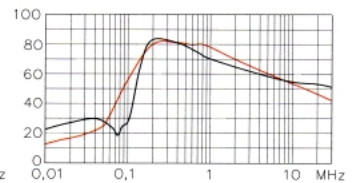
75 A



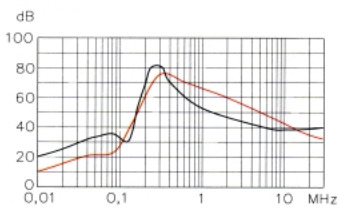
100 A



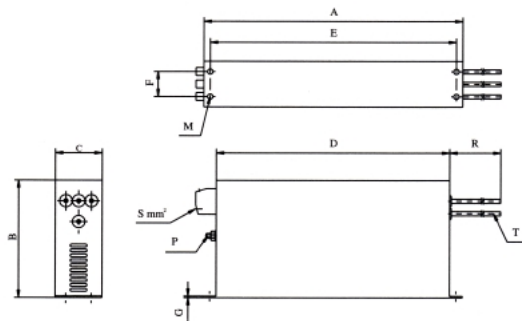
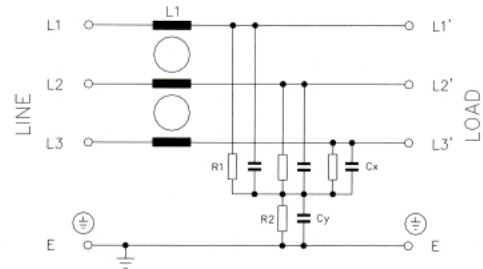
130 A



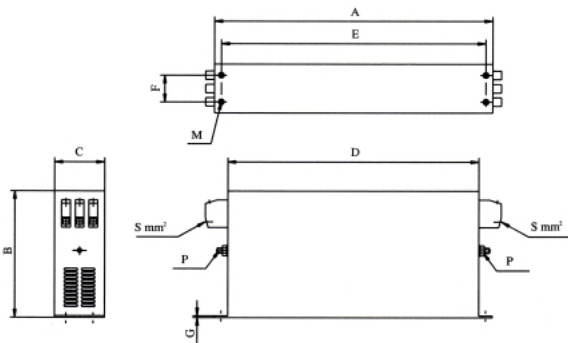
180 A



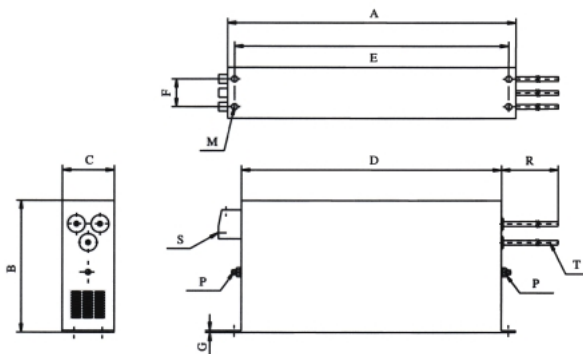
— asym.,
— symm.



Filter	Compact-480-7	Compact-480-16	Compact-480-30	Compact-480-42	Compact-480-55	Tol. ± mm
	Compact-520-7	Compact-520-16	Compact-520-30	Compact-520-42	Compact-520-55	
A	255	305	335	329	329	1,0
B	126	142	150	185	185	1,0
C	50	55	60	70	80	0,5
D	225	275	305	300	300	1,0
E	240	290	320	314	314	0,5
F	25	30	35	45	55	0,3
G	1	1	1	1,5	2	0,1
T	AWG 16	AWG 16	AWG 10	AWG 8	AWG 6	-
R	300	300	400	500	500	20,0
M	6,5	6,5	6,5	6,5	7	0,2
P	M5	M5	M5	M6	M6	-
S	4	4	10	10	25	-



Filter	Compact-480-75	Compact-480-100	Compact-480-130	Tol. ± mm
	Compact-520-75	Compact-520-100	Compact-520-130	
A	329	379	429	1,0
B	220	220	240	1,0
C	80	90	110	0,5
D	300	350	400	1,0
E	314	364	414	0,5
F	55	65	80	0,3
G	1,5	1,5	2	0,1
M	6,5	6,5	6,5	0,2
P	M6	M10	M10	-
D	25	50	50	-



Filter	Compact-480-180	Tol. ± mm
	Compact-520-180	
A	438	1,5
B	240	1,5
C	110	1,0
D	400	1,5
E	414	0,5
F	50	0,3
G	2	0,1
T	Wires 50 mm ²	-
R	500	20,0
M	6,5	0,2
P	M10	-
S	95 mm ²	-

PROCOND OY
Veikkontie 9
FI-03100 Nummela
Finland

www.procond.fi
sales@procond.fi
Tel. +358 (0)10 424 8900
Fax. +358 (0)10 424 8901